

Softick Audio Gateway

User guide

Copyright © 2005-2007 Softick Ltd.

All rights reserved.

Table of Contents

1. Introduction.....	3
1.1 Main features.....	3
2. System Requirements and compatability.....	3
3. Installation and starting.....	5
3.1 Installation	5
3.3 First start.....	10
5. Usage recomendations.....	14
5.1 Media player launch.....	14
5.2 Controlling Media player.....	14
5.3 Desk Accessories.....	14
6. Purchasing and registration.....	15
6.1 Registration code entering.....	15
7. Technical support.....	16
7.1 Well-known problems and solutions.....	16
8. Legal information.....	17

1. Introduction

Softick Audio Gateway is the first audio streaming solution for Palm OS handhelds which allows to connect Palm OS handheld to the Bluetooth stereo headphones and listen to digital audio played by any of Palm OS applications, including multimedia players, audio book readers and games.

Softick Audio Gateway can operate with any Bluetooth ® audio device which supports Advanced Audio Distribution Profile (A2DP) designed to transfer a high-quality stereo audiostream wirelessly.

Softick Audio Gateway captures digital audio from Palm OS audio subsystem and redirects it to the Bluetooth A2DP device:

- Stereo headphones or stereo headsets;
- Desktop PC with A2DP drivers installed;
- A2DP Speakers.

You can make and receive calls via the Bluetooth headset. Softick Audio Gateway automatically stops music and switches your headset to the phone call. Music will be restored after your talk is finished.

1.1 Main features

- Advanced Audio Distribution Profile support (A2DP)
- Audio/Video Remote control Profile support (AVRCP)
- High quality stereo streaming, up to 304Kbps audio bitrate
- Wide-range players and audio software compatibility
- Easy setup and usage
- Support for Mono and Stereo sound stream
- Built-in audio post filter to improve low bitrate audio quality

2. System Requirements and compatability

- Palm OS 5.1 or higher handheld
- Built-in Bluetooth technology support
- 200K of Storage Memory
- Bluetooth A2DP compatible headset, headphones or speakers.

Tested devices:

Palm			
<i>Model</i>	<i>Processor type</i>	<i>Test results</i>	<i>Notes</i>
Tungsten-T3	Intel PXA25x	Totally compatible	High quality mode is supported
TX	Intel PXA27x	Totally compatible	High quality mode is supported
Tungsten-T5	Intel PXA27x	Works fine	Medium quality mode is supported
Zire 72	Intel PXA27x	Works fine	Medium quality mode is supported (high quality with TCPMP player)
Treo 700p	Intel PXA27x	Totally compatible	Version 1.08 or later is required
Treo 680	Intel PXA27x	Totally compatible	Version 1.10 or later is required
Treo 755P	Intel PXA27x	Totally compatible	Version 1.14 or later is required
Centro	Intel PXA27x	Totally compatible	Требуется версия 1.17 или выше

PalmOne			
<i>Model</i>	<i>Processor type</i>	<i>Test results</i>	<i>Notes</i>
Treo 650	Intel PXA27x	Totally compatible	High quality mode is supported
Tungsten E2	Intel PXA27x	Works fine	Only low quality mode is supported
Life Drive	Intel PXA27x	Works fine	Sound glitches during access to HDD or SD card.

Sony			
<i>Model</i>	<i>Processor type</i>	<i>Test results</i>	<i>Notes</i>
CLIE PEG UX40	Sony CLX	Doesn't work	Not supported yet
CLIE PEG UX50	Sony CLX	Doesn't work	Not supported yet
CLIE PEG TH55	Sony CLX	Doesn't work	Not supported yet

Tapwave			
<i>Model</i>	<i>Processor type</i>	<i>Test results</i>	<i>Notes</i>
Zodiac	Motorola i.MX	Totally compatible	Version 1.05 or later is required
Zodiac 2	Motorola i.MX	Totally compatible	Version 1.05 or later is required

Tested headsets:

Lubix UBHS-LC1
Lubix UBHS-NC1
Helium Digital Bluetooth Headphones HDBT-700
Motorola DC800 Stereo Transceiver
Motorola HT820
Motorola S9
Plantronics Pulsar 590A Headset
Bluetake i-Phone BT420EX Bluetooth Hi-Fi Sports Headphone
iPAQ Bluetooth Stereo Headphones (made by Logitech)
iMuffs Stereo Bluetooth Headphones for iPod
Samsung SBH-100
TEN naviPlay Bluetooth Stereo Kit for iPod
Sony Ericsson HBH-DS970
Jabra BT620S
Bluetake A2DP enable PC dongle

According to our customers feedback the following headsets should also be compatible:

Qstik EVOQ BT stereo headset
Jabra BT8010
Blueant x5
Nextlink's Spider Bluetooth Stereo Headset
Logitech 'Music AnyWhere'
Scosche Car Bluetooth Receiver
motorola s805
Sony Xplod BT2500 car stereo
Plantronics pulsar 260
Samsung SBH170
Sony DR-BT50
Nokia CK-20W car audio
Logitec LBT-HS200C2 bluetooth headphone set
Creative CB2530
Motorola SoundPilot S705
iWing BES005
Sony DR-BT50
Beluga iVoyage BF 1-311 portable speaker
ILUV i903 Noise-Canceling Bluetooth Stereo Headphones
You can find any timely information about compatible devices on
<http://www.softick.com/bluetooth-audio/>

3. Installation and starting

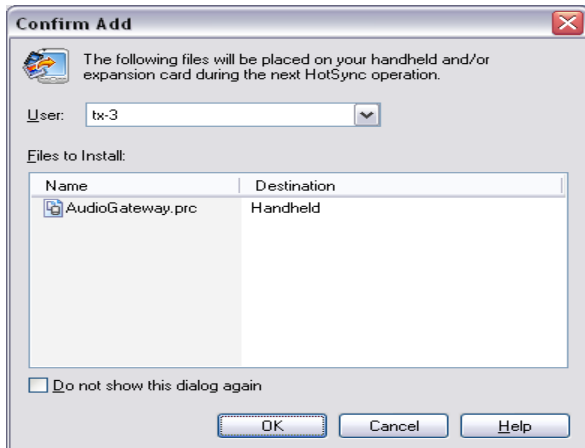
3.1 Installation

To install this application, it is necessary to have HotSync application and USB drivers for your handheld on your PC. You can find all this in the handheld delivery

set.

Unpack archive to any temporary folder. Enter this folder and double-click the mouse on the **AudioGateway.prc** file.

If option **Do not show this dialog again** previously haven't been chosen, a similar to this one window has to appear:



Click **OK**.

Fig. 1: Hot Sync procedure, step 1

Following window will appear:

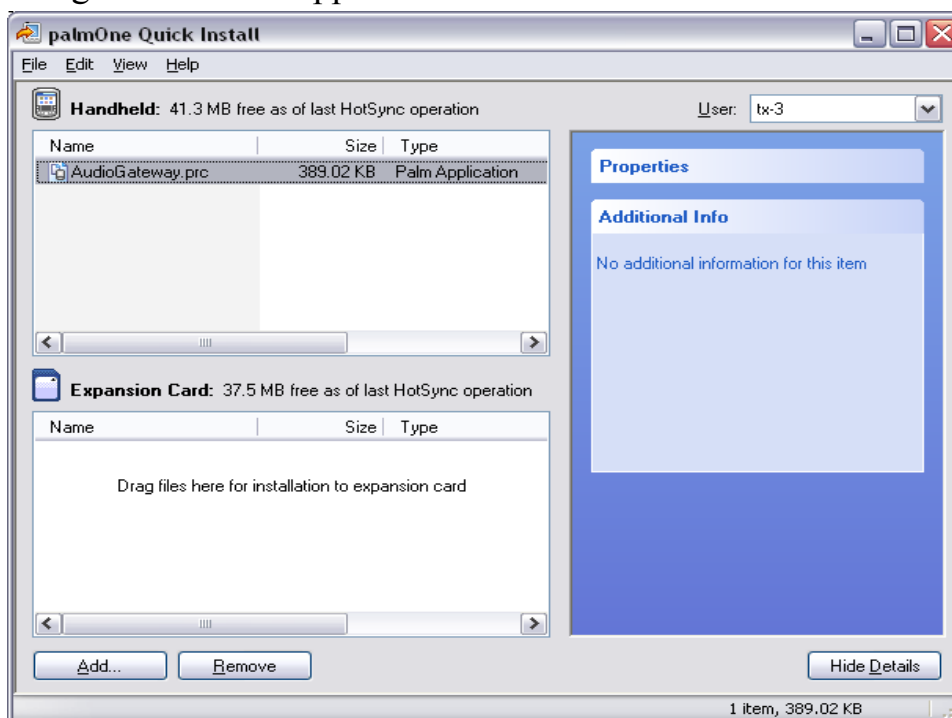
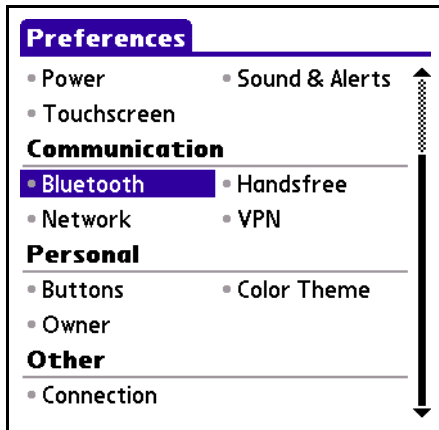


Fig. 2: Hot Sync procedure, step 2

Connect your handheld and PC, than tap the synchronization button. Soon both computers will report that synchronization is complete. Now the application is installed and ready to be used.

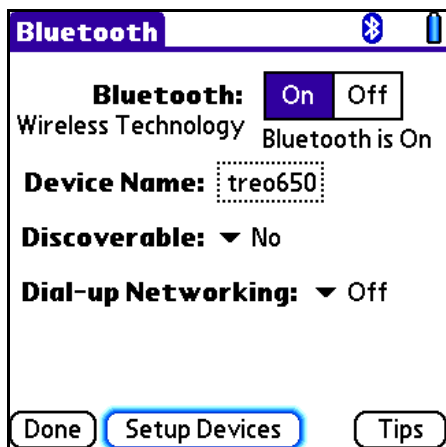
3.2. Connection

Before using your Bluetooth headset or headphones, you need to establish trusted relationship between your Palm powered device and the headset. To pair the Bluetooth device, launch Prefs application (System category). Please note that the following screenshot was taken on Palm Treo 650 and may vary from device to device.



Choose **Bluetooth**.

Fig. 3: Pref configurator



Make sure that the Bluetooth module is turned ON. Tap the **Setup Devices** button.

Fig. 4: Bluetooth panel



Fig. 5: Setup Devices form

Tap the **Trusted Devices** button.

Note: If you are Treo user and want to use your headset answering the phone calls, you need to tap the **Hands-free Setup** button instead.



Fig. 6: Tusted Devices form

Trusted Devices form shows the list of currently paired Bluetooth devices. You need to put your Bluetooth headset or headphones into discoverable mode and tap the **Add Device** button.

Please refer to the headset User manual in order to learn how to put your headset or headphones into discoverable mode.

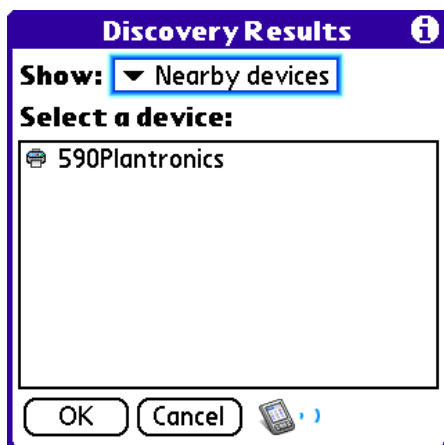


Fig. 7: Device discovery

Select you device from the list and tap the **OK** button. If your device cannot be discovered, please check whether you put it properly into discoverable mode. Usually the LED of the headphones blinks red and blue in the discoverable mode.

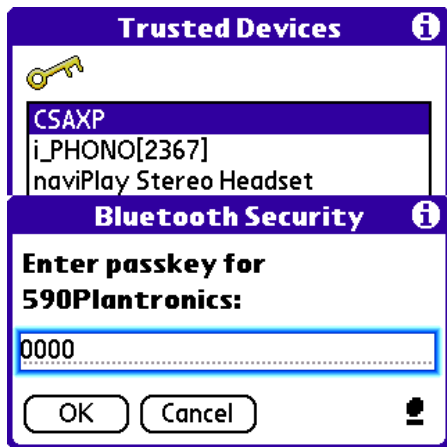


Fig. 8: PIN code request

During connection to your headset you may be asked for PIN code (passkey). Usually it is '0000', but please refer to your headset/headphone User manual for details.

Now the pairing of your Bluetooth headset or the headphones is complete. It is obligatory to reboot your handheld before launching Softick Audio Gateway.

3.3 First start



Fig. 9: Setup Wizard Step 1.

During the first launch a device setup wizard will appear. If you have already paired your A2DP device, press the **Skip** button. If you want to set it up, press the **Start Pairing** button to exit Audio Gateway and launch Palm OS Bluetooth pairing wizard.

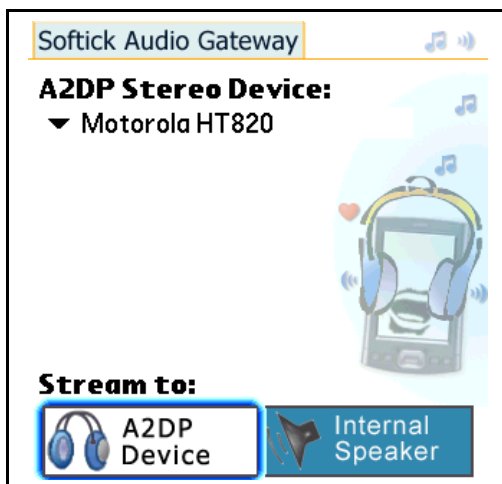


Fig. 10: Softick Audio Gateway Main Screen

Select your device from the list and press **A2DP Device** button to establish connection to the A2DP headset or the headphones, and redirect sound stream to it.

If you want to stop such redirection and disconnect from headphones, tap **Internal Speaker**, and sound will be routed to the internal speaker or to the wired headset.

4. Configuring

The application has wide possibilities in managing the Quality/ Performance balance.

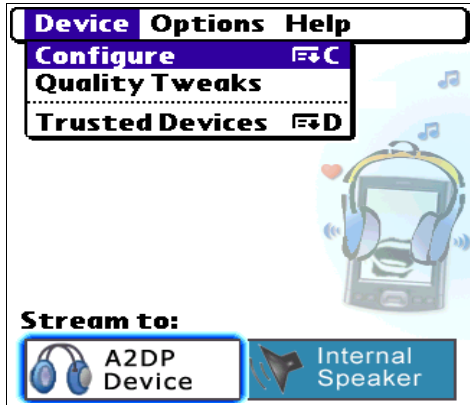


Fig. 11: Application menu

To enter **Settings** menu tap **Device – Configure**.

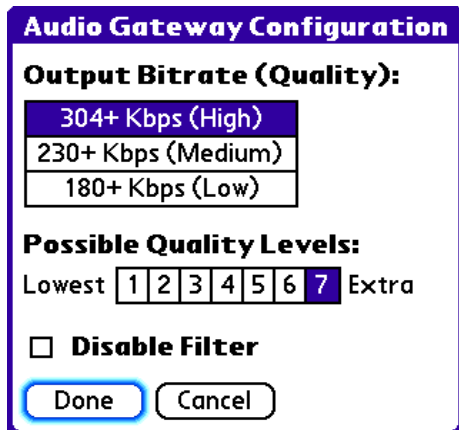


Fig. 12: Configuration

Choose one of the seven bitrate values to achieve an optimal sound quality. Smaller bitrate values can be applied in sources with low bitrate, for example when listening to an audiobook. The less is the value, the less resources do processor and radiomodul need. On some handhelds with a slow processor dropouts of sound fragments are possible due to the lack of processor time.

Softick Audio Gateway built-in audio filter activates automatically for audiodata with low bitrate (e.g. audiobooks). **Disable Filter** option disables the operation of the filter.

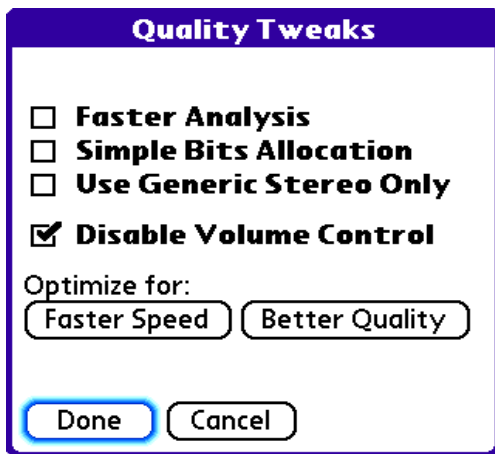


Fig. 13: Quality adjustment

Faster Analysis. This mode was used in previous versions of Audio Gateway. When the option is on, the subprogram of stream processing is faster, but sound quality is worse, especially for low-rate sound.

Simple Bits Allocation allows to install a bit distribution using SNR method instead of LOUDNESS. This method is slower, but you can achieve higher sound quality (the mode will be changed only after the reconnection of headphones is done). To learn more read A2DP specification.

Use Generic Stereo Only disables JOINT STEREO coding. You can switch this option off in order to achieve a better sound quality.

Disable Volume Control switches a scaling subprogram in Audio Gateway off. If this option is switched on, programs won't be able to adjust the sound volume, but the headphones will receive unmodified audiostream, more natural than the scaled one. You can adjust the volume directly on your headset.

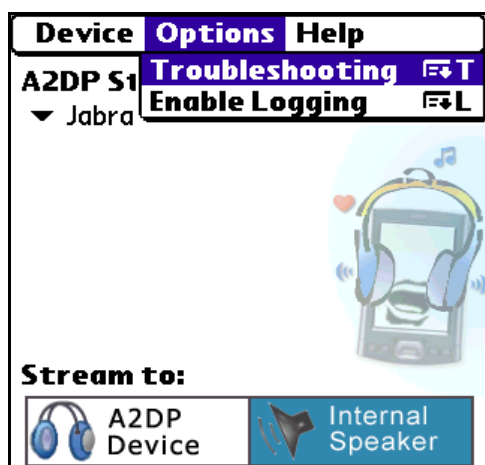


Fig. 14: Troubleshooting

There is a **Troubleshooting** menu in order to eliminate problems with some handhelds.

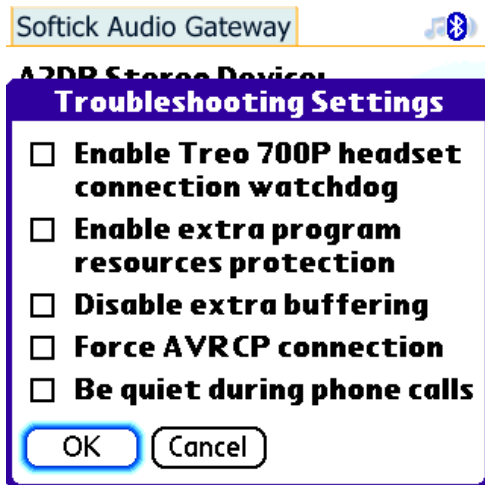


Fig. 15: Troubleshooting Options

Sometimes Treo700p loses connection with a headset. Softick Audio Gateway can permanently resume the connection, just switch on the option **Enable Treo 700p headset connection watchdog**. Though, switching this option may soon drain your battery.

In case of spontaneous handheld rebooting during the process of hibernation, or after Hot Sync while using Softick Audio Gateway, switch **Enable extra program resources protection** option. Pay attention – while this option is ON, you can't delete or reinstall Softick Audio Gateway.

Disable extra buffering allows to eliminate sound dropouts that are possible in the headphones with a small buffer. It happens, that such headphones pass audiodata which was sent by Softick Audio Gateway in order to fill its buffer.

Meanwhile, a big buffer allows to eliminate radiotransmission problems in the headphones which are able to perform prebuffering and fill unexpected stream pauses. The operation of this option depends on the headset you use, that's why it's up to you whether to switch this option on.

Force AVRCP connection defines what will initiate AVRCP connection – AudioGateway or a headset. If the buttons of playback control stop working after reconnection or the call ending, try to change this option into reverse.

Be quied during phone calls

Works if you have installed a program that plays MP3 ring tone through speaker. If this option is switched off while Audio Gateway is switched on, the

ring tone will be heard through speaker. If this option is on, the ring tone is blocked and you will hear only standard call notification in headphones.

5. Usage recommendations

5.1 Media player launch

After the connection to the Bluetooth headset is established, you can switch back to the Launcher using the Home button (Softick Audio Gateway will keep Bluetooth connection), launch your media player and enjoy music via Bluetooth!

Note: Make sure to disconnect the Bluetooth headset when you do not use it. Keeping Bluetooth connection active can quickly drain your batteries.

5.2 Controlling Media player

You can control your active media player using buttons on the headset. Softick Audio Gateway supports the following media players:

Media Player	Vendor	Notes
Pocket Tunes	Normsoft, Inc.	Full support.
AeroPlayer	Aerodrome Software	Full support
TCPMP	corecodec.org	Full support. Player doesn't support background mode.
RealPlayer	Real	Unable to control during background playback.
Audible Player	Audible, Inc	Full support. Version 3.01 of Audible Player is required.
Kinoma Player	Kinoma	Full support. Version 4.2 is required.
mOcean	MotionApps	Full support

Softick Audio Gateway supports the following commands via AVRCP (Audio/Video Remote Profile): Next Track, Previous Track, Play, Pause and Stop.

5.3 Desk Accessories

Desk Accessory, or **DA**, is a small application that can be launched from the context of any application without switching to the Launcher. Softick Audio Gateway is shipped with three Desk Accessories, which allows to establish connection to the A2DP headphones or disconnect from it quickly.

In order to use DA, you need to install the third party DA Launcher application. There is at least one freeware program called “DA Launcher” and a few commercial or shareware projects.

6. Purchasing and registration

Softick Audio Gateway is distributed on the try-before-you-buy basis. The application works as a full version within a period of 21day. When this period is over you should buy the application or stop using it. You can buy Softick Audio Gateway on <http://www.softick.com/bluetooth-audio/>

6.1 Registration code entering

After you have purchased our product, you will receive an unlock code. You have to enter this code to the Audio Gateway. Do the following:

- Start Softick Audio Gateway
- Tap in the top of the screen on **Softick Audio Gateway**
- Choose **Help**, than **Register**
- The Registration form and display keyboard will appear.

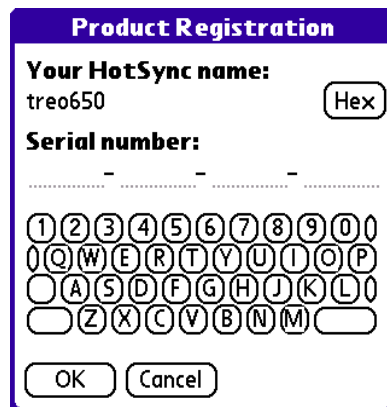


Fig. 16: Registration Form

- Enter the code you have received and tap **OK**

In case you get an Error message, repeat the code entering more carefully. If the problem remains, please turn to our support service:

<http://softick.com/suprequest/index.php>

Keep an unlock code you have received. However, if you've lost it, you can receive it again on <http://softick.com/support/serialrecover.php>

7. Technical support

We provide technical support to our customers, so you are welcomed to our web-page <http://softick.com/support.html>. You can contact us by e-mail: support@softick.com

Also you can visit our forum: <http://www.softick-forum.com/>

Before asking a question please read FAQ on our site (<http://www.softick.com/faq.php>) and following section:

7.1 Well-known problems and solutions

- Mono Bluetooth headsets don't support stereo A2DP profile, necessary for Audio Gateway. These headsets operate only in SCO mode. Currently this profile isn't supported by our product.
- Softick Audio Gateway supports AVRCP (Audio/Video Remote Control Protocol) profile to control functions of player via the headset. But this profile has to be supported by player as well. Currently AVRCP is supported for pTunes, RealPlayer (in active mode), Aeroplayer (1.07+), Audible player, mOcean player from MotionApps and TCPMP.
- There is known incompatibility between Normsoft Pocket Tunes and Softick Audio Gateway which prevent from playing DRM (Digital Rights Management) protected audio files. There is no solution for this problem at time of writing
- If during the connection to the headset an Error message **The remote device's security architecture denied the connection** appears, try to reboot your handheld, switch off/switch on the headset and connect your devices in **Prefs** panel. Than choose a headset in the Main window of Audio Gateway. Read about headset connection in its documentation in details. Make sure that you've entered the PIN-code correctly. When connecting your devices, try to use **Current discovery** instead of Devices list.
- Error message **Unable to connect to the headset. The remote device is out of resources** reports that your headset have not been disconnected from another Bluetooth device. Please turn off/turn on your headset.
- If while watching video your handheld freezes, probably your avi's codec uses too much CPU time and thus Audio Gateway does not have enough CPU time. Please try to reduce video resolution and change video codec (with PocketDVD for example). Also try to reduce output bitrate in Audio Gateway

preferences (**Device->Configure**).

- While working on Life Drive you may hear choppy and slow sound, because Palm OS reads from time to time the data from LD hard disk. That's why Audio Gateway doesn't have enough time to send music data via Bluetooth. We can suggest you the following: a) Try to store your MP3s to SD card and listen to music from this card. b) Do not exit from your media player during music play. Also please read our forum <http://www.softick-forum.com/>
- Sometimes while listening to music sound some dropouts can happen, since Audio Gateway sends too large data stream via Bluetooth. In case of a transmission error, Palm Bluetooth library has no time for the second transmission. The error can happen because you've moved away from your handheld and signal strength has dropped. Moreover, too many people use their Bluetooth devices all at once, and such devices influence your headset and handheld. Radio interferences from cellular communication networks also are possible.
- If by using mOcean player the sound is too loud and distorted, switch on the option "Disable volume control" in the section "Quality tweaks" .

8. Legal information

All above-mentioned names and trademarks are the property of the respective companies.